

379200

379300

379400

6914100

6914100

6914000

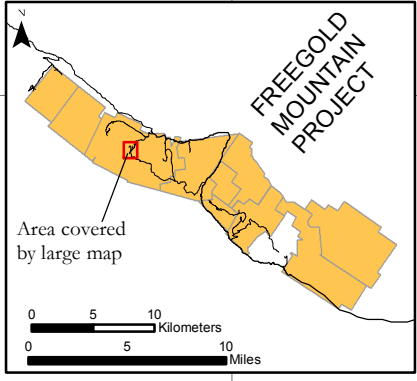
6914000

6913900

6913900

6913800

6913800



GRD-06-036

GRD-06-026

GRD-06-039

2.00 m @ 1.23 g/t

1.20 m @ 9.88 g/t

1.00 m @ 3.08 g/t

GRD-06-035

GRD-06-023

GRD-06-030

1.50 m @ 6.37 g/t

27.10 m @ 1.02 g/t

2.70 m @ 1.25 g/t

GRD-06-034

GRD-06-024

GRD-06-027

GRD-06-029

2.00 m @ 20.25 g/t and  
3.30 m @ 28.47 g/t

12.90 m @ 1.15 g/t

71.95 m @ 0.50 g/t

49.50 m @ 0.50 g/t

GRD-06-033

GRD-06-025

GRD-06-022

GRD-06-019

2.00 m @ 1.38 g/t and  
1.50 m @ 1.71 g/t

10.60 m @ 1.18 g/t

49.50 m @ 0.72 g/t

44.50 m @ 1.02 g/t

GRD-06-032

GRD-06-028

GRD-06-020

GRD-06-021

22 m @ 0.60 g/t

1.10 m @ 2.98 g/t and  
30.00 m @ 0.50 g/t

80.30 m @ 0.67 g/t and  
1.30 m @ 6.15 g/t and  
1.00 m @ 5.07 g/t

124.43 m @ 0.67 g/t

78.00 m @ 0.55 g/t incl.  
1.00 m @ 11.07 g/t

GRD-06-031

GRD-06-017

GRD-06-018

GRD-06-016

GRD-06-038

1.00 m @ 11.07 g/t

23.81 m @ 0.76 g/t

124.43 m @ 0.67 g/t

70.95 m @ 0.58 g/t

PN88-8

GRD-06-017

GRD-06-018

15.24 m @ 31.45 g/t

GRD-06-037

GRD-06-016

DN04-08  
GRD-06-015

### Nucleus Zone Drilling February 1, 2007

- Drillholes in Feb. 1 Press Release
- Drillholes in Jan. 18 Press Release
- Drillholes in Dec. 19 Press Release
- Drillholes in Nov. 30 Press Release
- Pre-2006 Diamond Drillholes
- 1988 Percussion Grid
- Roads

0 10 20 Meters  
0 10 20 Yards

112.30 m @ 0.65 g/t incl.  
1.50 m @ 8.26 g/t

6.09 m @ 11.16 g/t

19.81 m @ 1.74 g/t and  
1.40 m @ 9.26 g/t

110.81 m @ 1.35 g/t incl.  
3.23 m @ 23.60 g/t

note: the first drillhole in 2006 was GRD-06-015